

SF SCUBA FORCE





**OUR PASSION:
DIVING**

FROM TROPICAL REEFS TO COLD FRESH WATER LAKES.

FROM A RELAXING DIVE AT THE WEEKEND TO AN EXTREME TECHNICAL EXPEDITION.

**OUR JOB:
EQUIPMENT**

SCUBA FORCE PRODUCTS ARE USED BY DIVERS AROUND THE GLOBE.

WE SHARE YOUR PASSION FOR DIVING AND EVERY DAY WE GIVE EVERYTHING TO MAKE YOUR ADVENTURE AS SAFE AND ENJOYABLE AS POSSIBLE.

IT IS ALWAYS OUR GOAL TO PRODUCE EQUIPMENT THAT OFFERS THE BEST PERFORMANCE, THE HIGHEST SAFETY AND THE GREATEST COMFORT.

**OUR MOTTO:
HIGH-TECH
MADE IN EUROPE**

**DISCOVER THE
ADVENTURE**

DIVE INTO WORLD OF SCUBA FORCE AND DISCOVER A NEW ADVENTURE EVERY DAY.



SCUBA FORCE XPEDITION

A NEW DIMENSION IN DRY DIVING

AGILITY MEETS DURABILITY!



In cooperation with our material supplier, Fothergill Polycom, we have developed a dry suit that sets new standards.

Fothergill's newest, innovative TYGATEX® material combines two of the most important factors for a dry suit: agility and durability. The ripstop nylon with a polyester feel meets all of the important requirements for dry suits. Easy dressing; wonderful texture, and excellent movement.

Additionally, the manufacturing and assembly process of the XPEDITION sets new standards. Most importantly, the new SCUBA FORCE Double Seal Technology. In a process which was developed by SCUBA FORCE, all seams are double sealed. Based on our decades of experience with Aquasure sealed seams, we are additionally combining this proven technology with an extra machine-coated tape. This specialized seam tape is manufactured by a German company that typically provides products to the automotive industry. Flexibility and abrasion resistance are the main factors here.

WITH THE NEW XPEDITION WE ADHERE TO OUR MOTTO:

HIGH-TECH MADE IN EUROPE

In addition, the XPEDITION offers many unique features:

OPS - OVERLAY PROTECTION SYSTEM

The XPEDITION has the Overlay Protection System - OPS. The OPS protects the suit on exposed areas (shoulders, back, arms). We offer the OPS in two different materials, Kevlar and Cordura. Thus the XPEDITION can be individually tailored. Kevlar is coming in two styles – classic and triangle.

The Cordura is available in different colors:

- black, red, blue, olive and yellow



PERFECT FIT & NEW SIZES

A diagonal front zip combined with a telescopic torso provides the perfect fit. This combination also allows for independent entry and exit. The XPEDITION comes in five sizes for woman and ten sizes for men. We also offer a Custom Made Version (made to measure suit).

- Lady Sizes: XXS, XS, S, M, L
- Man Sizes: XXS, XS, S, M, ML, L, LL, XLS, XL, XXL

UNIQUE BOOT SELECTION

Select between two different styles at no additional charge. Choose between Dry Boots or Slim Line Boots depending on the application or individual preference. The size of your boot can be customized for the perfect fit.

- Dry Boots are available in sizes from 38 – 50 (European); 5/6 – 13/14 (International)
- Slim Line Boots are available in sizes from 2XS – 4 XL

INTEGRATED XBP BELLOWS POCKETS

The basic configuration of the XPEDITION provides two XBP bellows pockets. These large-volume suit pockets provide the diver with a secure space to store equipment. A reinforcement rod in the outer pocket cover assures easy location and open and close, even when wearing thick gloves. Integrated bungee loops allow you to attach your equipment and guarantee that everything stays within reach. Additional internal pockets offer even more storage room and separation for necessary equipment such as wetnotes.

ADDITIONAL FEATURES

- Latex seals (neoprene and silicone seals (SITECH) at an additional cost)
- High Performance inlet and exhaust valves
- Integrated knee and leg protection
- Suspender system
- Integrated waist adjust system
- Great warm neck collar
- Crotch strap
- Dynat metal zipper
- Overlay colors: black, red, yellow, blue and olive



SCUBA FORCE XPEDITION SE

**MAXIMUM PROTECTION FOR
MAXIMUM FLEXIBILITY!**



The development of the SCUBA FORCE XPEDITION SE focused on two requirements: maximum protection with maximum flexibility.

The SCUBA FORCE "Double Seal Technology" in which all seams are sealed and double sealed with a machine-applied hotmelt tape, convinced even with its predecessor the Xpedition.

The SCUBA FORCE XPEDITION SE has a protection package that meets even the highest demands and the most adverse environments.

All overlays and protective elements in the SE version are made of sturdy and abrasion-resistant Kevlar and are fitted with double stitching.

The combined leg and knee protection protects the front of the legs from damage, even in extreme environments.

Special attention is on the three-piece upper body overlay and the four-part crotch and buttocks protection.

Due to this very complex but in the end highly effective production process, the overlay elements individually to install, a maximum protection value with maximum mobility is achieved. The XBP bags have been specially redesigned for the SE variant and are now available in two sizes. They can be pressed together and remain in shape thanks to Velcro closures so that the diver can variably adjust the bag size to fit his contents. Especially sidemount divers will be thrilled.

THE XPEDITION SE TRIM CRITERIA:

SOPS – SPLITTED OVERLAY PROTECTION SYSTEM

The XPEDITION SE features the Splitted Overlay Protection System - SOPS, made entirely of high-quality and extremely durable Kevlar. The system protects the suit in all exposed areas (shoulders, back, arms, zipper, crotch, buttocks and legs) without restricting mobility.

PERFECT FIT & SIZES

The new diagonal metal BDM front zipper combined with a telescope torso provides the SCUBA FORCE XPEDITION SE for a perfect fit. This combination also allows an independent dressing and undressing. The SCUBA FORCE XPEDITION SE comes in five women's and ten men's sizes. Of course, it is also available as a tailored suit (Made to Measure / Custom Made).

- Lady Sizes: XXS, XS, S, M, L
- Man Sizes: XXS, XS, S, M, ML, L, LL, XLS, XL, XXL

UNIQUE BOOT SELECTION

At no extra charge, the SCUBA FORCE XPEDITION SE can select both boot size and boot type. Two different types are available. A classic sturdy neoprene boot and the SCUBA FORCE Slim Line boots. The boots are available in the following sizes:

- Dry Boots are available in sizes from 38-50 (European); 5/6-13/14 (International)
- Slim Line Boots are available in sizes from 2XS-4XL5/6 – 13/14 (International)
- Slim Line Boots are available in sizes from 2XS – 4 XL

EXPANDABLE XBP POCKETS

The SCUBA FORCE XPEDITION SE has two large expandable XBP pockets, these are available in two sizes (standard and small, depending on body size). The large-volume bags offer the diver (in both sizes) enough space for additional equipment required. A reinforcement in the pocket lid increases the grip and facilitates handling even with thick gloves. Built-in straps made of durable webbing (in the main and lid pockets) allow for secure attachment of the accessories and simplify handling. These can be extended at any time with bungees. The expandable XBP pockets have a separate inner pocket in which, for example, wetnotes can be stowed.

ADDITIONAL FEATURES

- Latex cuffs, arm and neck, sizes S - XL
- Neoprene and silicone cuffs (SITECH) - at extra cost
- SCUBA FORCE Argo and Shell, High Performance Inlet and Outlet Valves
- SCUBA FORCE Vega Valve - combined intake valve with E / O Cord - for an extra charge
- Sturdy suspenders system
- Integrated waistband
- Big embroidered heat collar
- Triangle - crotch strap
- BDM metal zipper (YKK) - protective zipper (YKK)
- Name patch - Name tag on the bag - at extra charge Dynat metal zipper.



SCUBA FORCE EXPLORER NST

NO STITCH TECHNOLOGY
THE FUTURE BEGINS TODAY!



For decades, trilaminate drysuits have been produced in the same manner. In an elaborate process, waterproof material is sewn together by a machine which perforates the material and creating thousands of holes that must be subsequently sealed with an additional process and method. In particular, in highly congested areas, such as the crotch region, the procedures are very complicated and there are after longer periods of use integrity issues and leaking at the seams. Unfortunately, until today there was no alternative. But only until now - because the future starts today.

WITH THE EXPLORER NST, SCUBA FORCE PRESENTS A UNIQUE DRY SUIT WHICH IS PRODUCED IN A COMPLETELY NEW METHOD.

After more than three years of developmental work and in cooperation with a high-tech machinery company from Germany, we are now very proud to introduce the SCUBA FORCE **NO STITCH TECHNOLOGY** drysuit.

With this NST process, the main seams of the drysuit are welded with an ultrasonic welding machine and remain **WATERPROOF**. In contrast to conventional production with sewing machines, the material is not "perforated", but connected without damage to each other! By utilizing this welding process, no water can seep into the suit.

Ultrasonic welding machines are incredibly high-tech. In addition to the welding components (anvil wheel and horn), the machines are equipped with a CAN bus-controlled automatic control which permanently monitors the entire welding process and ensures that a consistent, high-quality welding result is guaranteed.

Not only are the welds of an EXPLORER NST waterproof, they are also constructed for incredible freedom of movement. The seams are able to increase the mechanical strength of the weld and are reinforced on the inside of the suit with a stable, highly abrasion-resistant tape. This tape is also applied (pressure / temperature) via machine under control of the main parameters. Although it is not necessary, all of the welded seams are additionally reinforced with this tape, thus offering double security.

This new modern method of production, combined with high quality materials, make the EXPLORER NST unmatched in performance. Durability, freedom of movement, weight - the new SCUBA FORCE suit sets the standards for the future of diving dry.

DETAILED FEATURES

PERFECT FIT & NEW SIZES

A diagonal front zip combined with a telescopic torso provides the perfect fit. This combination also allows for independent entry and exit. The EXPLORER NST comes in five sizes for woman and ten sizes for men.

- Lady Sizes: XXS, XS, S, M, L
- Man Sizes: XXS, XS, S, M, ML, L, LL, XLS, XL, XXL

OPS - OVERLAY PROTECTION SYSTEM

The EXPLORER NST has the Overlay Protection System - OPS. The OPS is made from a very strong Cordura material and protects the suit on exposed areas (shoulders, back, arms).

INTEGRATED XBP BELLOWS POCKETS

The basic configuration of the EXPLORER NST provides two XBP bellows pockets. These large-volume suit pockets provide the diver with a secure space to store equipment. A reinforcement rod in the outer pocket cover assures easy location and open and close, even when wearing thick gloves. Integrated bungee loops allow you to attach your equipment and guarantee that everything stays within reach. Additional internal pockets offer even more storage room and separation for necessary equipment such as wetnotes.



SCUBA FORCE EXPLORER NST

**NO STITCH TECHNOLOGY
THE FUTURE BEGINS TODAY!**

UNIQUE BOOT SELECTION

Select between two different styles, at no additional charge. Choose between Dry Boots or Slim Line Boots depending on the application or individual preference. The size of your boot can be customized for the perfect fit.

- Dry Boots are available in sizes from 38 – 50 (European); 5/6 – 13/14 (International)
- Slim Line Boots are available in sizes from 2XS – 4 XL

ADDITIONAL FEATURES

- Latex seals
- Neoprene and silicone seals (SITECH) at an additional cost
- High Performance inlet and exhaust valves
- Integrated knee and leg protection
- Suspender system
- Great warm neck collar
- Crotch strap

DRY SUIT HOOD

The SCUBA FORCE hood is made off neoprene and offers you a thermal collar. Due to the thickness of the neoprene of 8 mm the hood is especially suitable for cold water temperature. It is characterized particularly by its enormous wearing comfort. One way vent - to get air out of the hood without getting water in.

PEE VALVE

Adequate hydration is essential to proper hydration. A Pee Valve allows a diver to feel comfortable drinking plenty of fluid even before the dive begins. The SCUBA FORCE Pee Valve features an extremely flat construction (outer body only 0.3"). The check valve is integrated into the inner body. The large diaphragm diameter reduces drag while urinating to a minimum.

SCUBA FORCE CARRYING BAG

The SCUBA FORCE carrying bag is an innovative concept that allows for a great method of storing and transporting your drysuit and then once at the dive site, opens to reveal a great changing mat for on-the-go convenience.



SCUBA FORCE THENAR DRY SUIT GLOVES

THE ULTIMATE DRY GLOVE SYSTEM!



THE ULTIMATE DRY GLOVE SYSTEM FOR DIVERS WHO ARE CONSTANTLY SEARCHING FOR THE BEST PRODUCT.

SCUBA FORCE Thenar Drysuit Gloves with their unique oval ring sets provide more freedom of movement than traditional ring systems and are perfectly designed for technical diving.

Made from the highest quality materials, the SCUBA FORCE Thenar system offers unmatched performance.

OVAL THENAR RINGS

The oval Thenar rings are constructed of hard, anodized aluminum and the shape of the ring is devised to match the shape of the hand and follow the lines created by the thenar muscle.

DRAWING OF THE RING SYSTEM

The shape of the rings was modeled after the Thenar muscle in the wrist. Thus, the system provides a small scale while retaining the maximum diameter. The smaller the profile, the better the handling. This results in a much lower ring circumference compared to standard rings with a constant diameter.

The divers hand easily reaches through the Thenar ring and into the glove and all handling, such as reaching in the suit pocket or performing a valve drill is much easier.

RINGS

The full system includes protection rings for the gloves as well as the drysuit seal. The included robust O-rings provide a secure and permanent seal. This practical plug-in system makes the assembly and disassembly of the gloves very easy.

THENAR GLOVES

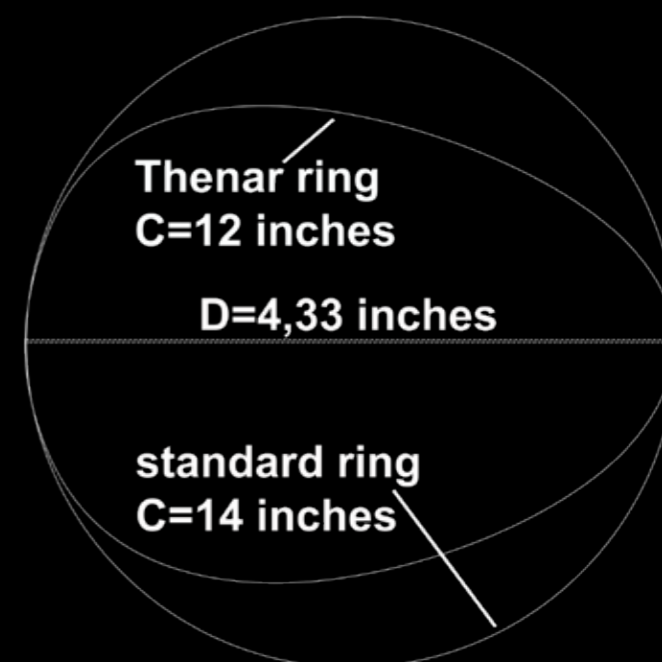
The gloves are stable, highly rip and tear resistant and still offer a high degree of mobility. The material and design of the glove offers extreme durability and flexibility.

- Available in the sizes: S - XXL

FLEECE GLOVES

And finally: of course high-quality fleece gloves are included with the Thenar system.

- Available in the sizes: S - XXL



ARCTIC X-NINE

AN UNDERSUIT SETTING
NEW STANDARDS



THE POWER-DUO

The ARCTIC X-NINE is currently one of the warmest drysuit undergarments on the market. The combination of two layers of Premium Elastic Fleece with an additional 400g Type B Thinsulate™ filling provides an unrivaled insulation. The Premium Elastic Fleece has many positive attributes. To begin with it is lightweight, supple, bi-elastic and highly breathable. In addition, it is washable and provides high wind protection. Thinsulate™ offers extremely high insulation values compared to similar materials. Furthermore, it is highly breathable as well as moisture absent. This combination guarantees not only extreme insulation from the cold but also a very high wearing comfort. The suit arose from a joint project with 3M™ Germany and has been developed carefully to achieve maximum insulation values. The result of both material layers sewn separately is a highly comfortable, highly flexible, breathable and washable undersuit.

ARCTIC X-NINE – Our Response to cold.

EXTREME BREATHABILITY

The Premium Elastic Fleece steadily protects the skin from moisture.

HIGH WEARING COMFORT

Thanks to the high wearing comfort combined with extremely high insulation characteristics, it is the ideal companion when diving with a trilaminate dry suit. Thanks to the special material combination the ARCTIC X-NINE offers the ideal solution for long and warm dives – especially in colder waters.

POCKETS

The X-NINE model comes with:

- two pockets in the leg area
- one zippered pocket on right upper arm and left chest area
- one zippered pocket in the chest area

KNEE AND ELBOW PATCHES

Even better insulation properties through the use of 200g Type B Thinsulate™ in the leg (thigh and knee) and arm (elbow).

PEE VALVE IMPLEMENTATION

The X-NINE has two passages in optimum position for Pee Valve- and / or heating implementation.

FEATURES

- One-piece suit
- Material: 2 layers of Premium Elastic Fleece
- 400g original 3M™ Type B - Thinsulate™ filling
- 200g original 3M™ Type B - Thinsulate™ filling (thigh, knees, elbow)
- Available Sizes: XXS – XXXL (unisex)
- Also available in following sizes: ML, LL, XLS
- Solid two-way zipper
- Two pockets in the leg area
- Zippered pocket on right upper arm and left chest area
- Insulation capability: high
- Bi-elastic
- Extremely breathable
- Wind resistant
- Washable
- Comes with a dry bag



ARCTIC X-PURE

OUR CLASSIC WARM CAN LOOK GOOD AS WELL



The ARCTIC X-PURE is made of two layers of Premium Elastic Fleece. Premium Elastic Fleece is a lightweight, supple, bi-elastic and breathable material. In addition, you can wash it and it will protect you against the wind. To achieve maximum insulation, both material layers are stitched separately and at critical points (chest, back, arms and knees) the material is accompanied by a pressure resistant "spacer" fabric. These significantly improved insulation properties are noticeable when floating horizontally in the water, while the freedom of movement is not restricted allowing for maximum flexibility.

The ARCTIC X-PURE is an incredibly versatile and highly adaptable undergarment. In milder water temperatures, the X-PURE is an excellent choice to wear under your trilaminate drysuit and in colder water, the ARCTIC X-PURE works well in combination with the ARCTIC X-BASIC for the perfect layering to keep you warm.

EXTREME BREATHABILITY

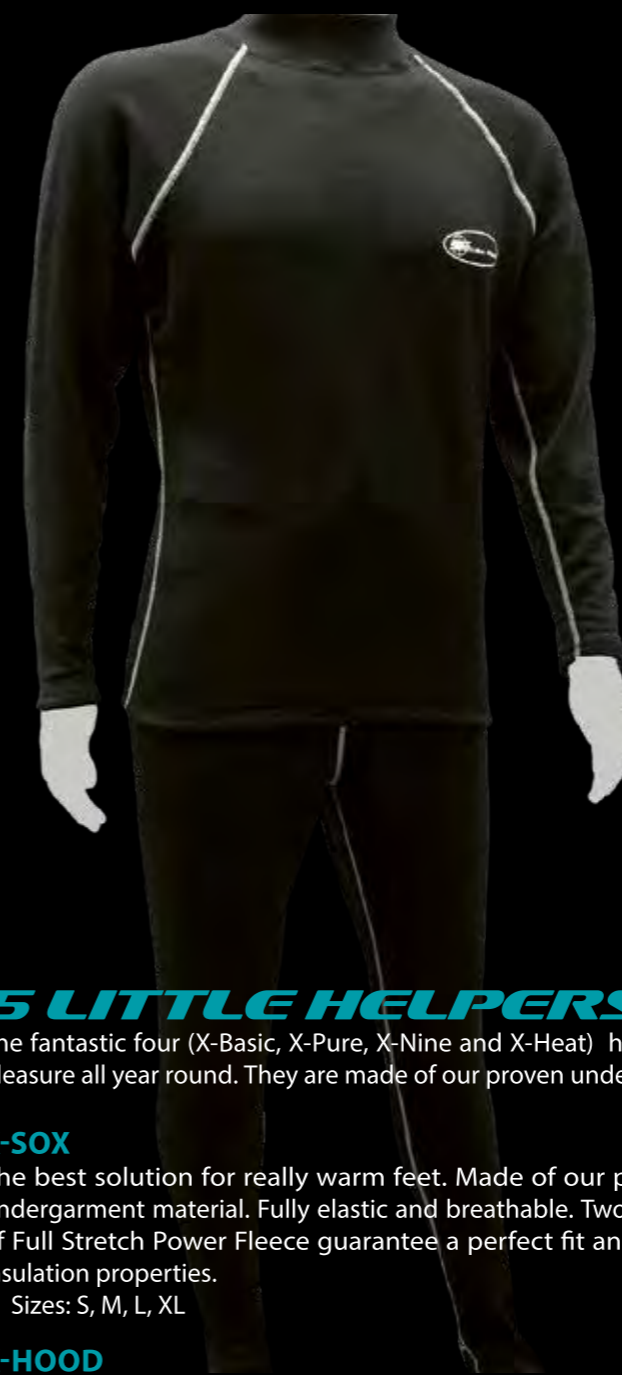
The patented material keeps the skin dry even during physical exertion and wicks moisture away from the body.

GREAT COMFORT

Due to the high wearing comfort, combined with extremely high insulation properties, it is the ideal companion for use under a trilaminate drysuit at moderate water temperatures.

FEATURES

- Material: two layers of Premium Elastic Fleece
- Available Sizes: XXS - XXXL (Unisex) also ML, LL, XLS
- Solid two-way zipper
- Two zip pockets
- Insulation capacity: very high
- Bi-elastic
- Extremely breathable
- Wind resistant
- Washable
- Hypoallergenic
- Pee Valve implementation (left and right)
- Comes in a dry bag



THE ARCTIC X-BASIC YOUR BASICS

ARCTIC X-BASIC – BASE LAYER

The ARCTIC X-BASIC is a single-layer drysuit undergarment made of Full Stretch Power Fleece. This material combines many positive features, such as lightweight, supple, bi-elastic and highly breathable. In addition, it is machine-washable and provides a high wind protection. Thanks to this outstanding material properties, the ARCTIC X-BASIC is the ideal complement to the Arctic X-Pure or Arctic X-Nine undergarment. Used as functional undergarment or in combination with additional layers, such as the ARCTIC X-PURE, it offers the ideal solution to ensure a long and warm dive – especially in colder waters.

EXTREME BREATHABILITY

The superior material securely protects the skin from moisture.

HIGH WEARING COMFORT

Thanks to the high wearing comfort the X-BASIC is the ideal companion when diving with a neoprene dry suit.

FEATURES

- Material: Power Fleece Full Stretch
- Set consisting of shirt and pants
- Size: XS – XXL (unisex)
- Isolation capability: medium
- Bi-elastic
- Extremely breathable
- Wind resistant
- Washable
- Hypoallergenic
- Comes in a dry bag

5 LITTLE HELPERS

The fantastic four (X-Basic, X-Pure, X-Nine and X-Heat) have 5 little helpers who will make your dives a warm and comfortable pleasure all year round. They are made of our proven undergarment material and are fully elastic, breathable and washable.

X-SOX

The best solution for really warm feet. Made of our proven undergarment material. Fully elastic and breathable. Two layers of Full Stretch Power Fleece guarantee a perfect fit and high insulation properties.

- Sizes: S, M, L, XL

X-HOOD

A beanie which not only looks good, but also keeps you warm! Made of Full Stretch Power Fleece.

- Sizes: S/M, L/XL

X-SLEEVES

Made of Full Stretch Power Fleece, so it keeps your hands warm!

- Sizes: S, M, L

X-NECK STRAIGHT & CURVED

Made of Full Stretch Power Fleece.

- Sizes: one size



SCUBA FORCE X-HEAT SYSTEM
HIGHTECH MADE IN GERMANY



The SCUBA FORCE X-Heat heating system was developed for the special requirements of technical diving.

The suit is made of lightweight, elastic, washable and highly breathable Power Fleece material which keeps the 100% waterproof welded heat pads in perfect position.

All plug connections and feedthroughs are waterproof in accordance with IP68 protection. This makes it possible to use the heating vest even with a flooded suit.

With woven silver threads the X-Heat heating pads offer maximum mobility and "breakage resistance." With a maximum heating temperature of 44°C / 111°F, the heating pads ensure a pleasant warmth during cold or long dives.

X-HEAT SUIT

The X-Heat Suit is a single-layer suit, made of Power Fleece material. The material is bi-elastic and offers all the features you would expect from the high-quality functional material.

The top and pants have a wide overlap area to provide an optimum fit and comfort.

Both the front and back areas have heated pad pockets which are closed by a zipper. The heating pads can be easily removed from the suit making X-Heat suit washable.

FEATURES

- High-quality Power Fleece
- Available Sizes: S, M, L, XL, XXL
- Breathable
- Washable (when removing the heating pads)
- Comes in a dry bag

X-HEAT-PADS

The X-Heat Pads are the revolutionary heart of the SCUBA FORCE X-Heat system.

The Textile Heating System® consists of woven conductive silver filaments that provide maximum mobility. The threads pose no risk of breakage like conventional heating cables. Using ultrasonic technology in a 100% waterproof Cordura sheath and welded, there is no risk of a short circuit even if water enters the suit. The surface temperature of the heating pad is a maximum of 44°C / 111°F.

FEATURES

- Pad material: Textile Heating System®
- Cover material: Cordura
- Waterproof welded
- 90° cable entry IP 68 protected.
- Suitable for rechargeable batteries 9 to 12 V
- Sample runtime: Battery (XS from Wings & More), 11.1 Volt, 23.8 Ah, 265 Wh; heating time 4 hours
- Total power 60 watts (per pad 30 watts - at 12 V)
- Surface temperature directly on the pad is a maximum of 44°C / 111°F



SCUBA FORCE VEGA VALVE

The VEGA Inflation Valve is designed for extended range diving in cold environments. It combines inflation of gas and passage for power cables to heated undergarments etc.

Both ports are swiveling for optimized equipment configuration. The inflator button is easy to find and easy to handle. On the outside is a standard E/O cord and on the inside is the connector for the X-Heat System.

DRY SUIT CONNECTOR

The tightening bushing of the SCUBA FORCE X-Heat heating system is made of POM, suitable for Apeks inlet valves and equipped with an E/O Cord 18/2 SVO. Compatible with all common batteries equipped with E/O Chord.

FEATURES

- Material: POM
- E/O Cord
- Cable gland and stress relief have a protection type of IP 68
- Connector, heating pad and bulkhead all have a protection type of IP 68

ULTIMATE BAG

Ultra robust, low weight, water-repellent material, the Ultimate Bag is the ideal travel companion on all your adventures. Large volume and versatile, the integrated grips make it easy to carry it as a hand bag or wear it as a backpack by using the shoulder straps. Inside of the bag are two pockets, as well as, a zip pocket which provide additional storage room and maximum organization. Tough enough to protect the SF2^{ECCR}, the Ultimate Bag is incredibly robust and a great all-around option for transporting your dive gear!

FEATURES

- Material: 1000er denier laminate
- Weight (empty): approx. 4.63 lbs (2,1 kg)
- Dimensions: approx. length: 31" (79 cm) x width: 15" x 21" (38 cm x 53 cm)
- Color: black



„KEEP IT SIMPLE!“

WAS THE LEADING MISSION STATEMENT WHILE ENGINEERING THE SF2



KEEP IT SIMPLE!

The vision became mission and finally reality. This is evident at first sight: The SF2 is configured very cleanly and simply. Compared to other rebreathers, the SF2 is compact and well-arranged. The reason: All important components are integrated into the carbon fiber tube. Therefore, the SF2 needs significantly less volume compared to other rebreathers. Tests, as well as various certifications, assure a constant level of security while diving. The SF2 is especially suitable for ambitious technical dives. It is available as either a backmount or sidemount rebreather.

STREAMLINED DESIGN

As if it were designed from one piece, the SF2 is shaped cleanly and simply. Moreover, the carbon fiber tube gives the SF2 a new, streamlined and high-quality design.

EASILY BUILT

The assembly and disassembly of the SF2 is very simple as the entire tube can be removed and all the internal parts easily reached.

COMPACT INSTALLATION

The electronic chamber is located within the head. The adapters of the breathing hoses are mounted at a slight angle on the head. This leads to a perfect positioning of the unit, as well as being, incredibly comfortable.

The scrubber canister is located between the head and midsection. Concerning the midsection, two different requirements of modern rebreathers are combined. First, you can find the bypass (ADV) which provides gas in case of low volume in the system. Second, the adapters of the "Manual Add" are located here.



SIDEMOUNT & BACKMOUNT

ELECTRONIC CHAMBER

The electronic chamber is the heart of the SF2. The O2 sensors as well as the Oxygen solenoid and the battery compartment are located here. The O2 sensors are located in a separate chamber to protect them from moisture. The electronic plate is located below the battery compartment. High-quality SMB angle plugs connect the plate with the sensors.

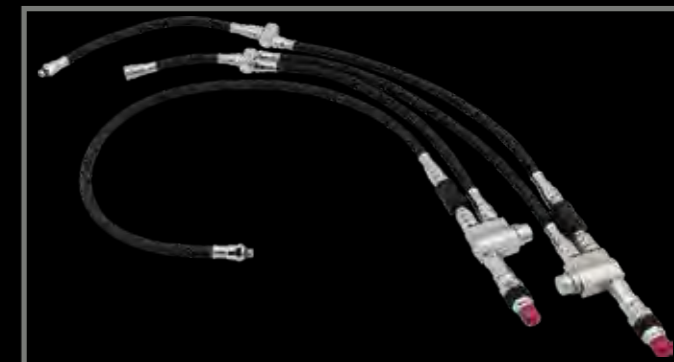
UNIQUE POSITIONING OF COUNTER LUNG

Compared to other rebreathers, the SF2 differs in the unique positioning of the counter lung. Often, the counter lung is positioned on the chest. In contrast, the SF2's counter lung is located in the lower tube. This leads to an ideal diver's position in the water and low resistance.

MANUAL ADDS & OFF BOARD GAS CONNECTOR

The "Manual Adds" enable you to add both oxygen and diluent manually. The "Off Board Gas Connector" allows you to add external gas. Hence, the fundamental idea of redundancy while diving is completely secured. Construction-conditioned the entire periphery works while applying "Off Board Gas".

Diameter	180 mm 7.09"
Height	500 mm 23.62"
Lung Volume	4,3 ltr 9.48 lbs
Gas supply diluent (ADV)	2nd Stage Black Devil
Gas supply O2	Jaksa solenoid valve
Power supply of magnetic valve	9 volt, approx. 40 hours
Power supply controller	1 x AA
Gas output	SCUBA FORCE Exhaust Valve
Oxygen sensors	3
Sealing case	O-Ring radial sealed
Sidemount ready to dive	14 kg 30.9 lbs
Backmount ready to dive	35 kg 77.2 lbs
Scrubber filling	2,5 kg 5.5 lbs
Controller	Shearwater Petrel 2 Dive Can



SF2^{ECCR} SIDEMOUNT

SF2^{ECCR} SIDEMOUNT REBREATHER

The SF2^{ECCR} is certainly the most popular Sidemount rebreather in the world. Its compact size combined with a low weight and a robust structure make the SF2 Sidemount a popular and reliable companion on exploration dives around the globe.

The basic components are taken from the SF2 Backmount version. The SF2 Sidemount has the same compact electronics chamber and inner bellows counter-lung. The upper and lower tube are constructed of a very light, yet durable carbon fiber.

MIDDLE PART

The SF2 Sidemount rebreather has a new middle part with a manual O2 and Diluent button. Also, the buttons are protected for external damage.



ADAPTER ONE WAY QUICK DISCONNECT FEMALE



SIDE MOUNT LOOP

The SF2 Sidemount rebreather has a DSV mouthpiece especially designed for the sidemount application. In collaboration with the best Sidemount divers in the world, we have developed a unique mouthpiece with excellent features:

FEATURES

- Optimum hose feed
- Extreme small design
- Bayonet hose fittings mouthpiece
- Rotatable
- Right / left hand use
- In water neutrally buoyant



ATTACHMENT

To configure the SF2 Sidemount rebreather as close as possible to the body, it has three attachment points.

We've designed a stainless steel rail at the top of the head and included two large Bolt snaps in the central region held via a hose clamp to allow for a streamlined attachment to your existing harness. The Bolt snaps can be varied in position so that the rebreather can be positioned individually.

PONY CLAMPS

High quality marine grade rust-free stainless steel bracket to attach pony bottle or battery canister to main cylinder. Extremely strong connection with quick release system.



BACKMOUNT CONVERSION KIT

* FOR THE LATEST SIDEMOUNT UNITS (2020)

FROM ONE TO TWO!

The Backmount Conversion Kit is designed for this.

Quickly and easily allowing the diver to convert from sidemount to backmount. This option is unique to the SF2 rebreather and not available with other units.

BACKMOUNT CONVERSION KIT CONSISTS OF

- Lower carbon tube with backmount frame
- 2 Complete pony clamps
- 4 x Stainless steel hose clip with protective cover
- Complete backmount breathing loop with backmount mouthpiece
- Manual Adds & Off Board Gas Connection incl. hoses and Shut Offs
- Double threaded connection
- 1 x 90 Degree low pressure angle
- 2 x Scubaflex hoses for Solenoid and ADV
- Mid Part complete (incl. ADV, Bellow etc.)



SIDEMOUNT CONVERSION KIT

FROM ONE TO TWO!

The Sidemount Conversion Kit is designed for this.

Quickly and easily allowing the diver to convert from backmount to sidemount. This option is unique to the SF2 rebreather and not available with other units.

SIDEMOUNT CONVERSION KIT CONSISTS OF

- Lower carbon tube with sidemount frame and foot
- Complete Mid Part (incl. Bellow, ADV etc.)
- Complete breathing loop with sidemount mouthpiece and necklace
- Complete SF2 Sidemount Off Board Gas Connection
- Stage bungee strap
- Head plate with bracket
- 2 x Bolt Snap



BACKMOUNT CONVERSION KIT

* FOR SIDEMOUNT UNITS UP TO 2019

FROM ONE TO TWO!

The Backmount Conversion Kit is designed for this.

Quickly and easily allowing the diver to convert from sidemount to backmount. This option is unique to the SF2 rebreather and not available with other units.

BACKMOUNT CONVERSION KIT CONSISTS OF

- Lower carbon tube with backmount frame
- 2 Complete pony clamps
- 4 x Stainless steel hose clip with protective cover
- Complete backmount breathing loop with backmount mouthpiece
- Manual Adds & Off Board Gas Connector incl. hoses and Shut Offs
- Double threaded connection
- 1 x 90 Degree low pressure angle
- 2 x Scubaflex hoses for Solenoid and ADV



SCUBA FORCE CYLINDERS

SCUBA FORCE ENTERS THE SCUBA CYLINDER BUSINESS

The rumors have been cooking for a few weeks and they are true. SCUBA FORCE enters the scuba cylinder business. But first, we focus on our core business: rebreathers. From now on we have 3 liter cylinders of 230 bar from European production with right and left valves. But there is more! In addition to the 3 liter cylinders, we have also included a real gem in the program: A 1.8 liter steel cylinder with a diameter of only 83 mm. The combination of a relatively high volume with a small diameter offers numerous application possibilities, for example as an "argon" cylinder or as a rebreather cylinder when sidemount diving! Cylinders and valves are available as a combination and as individual components.

MATERIAL	1.8 LITER	3 LITER
Diameter	83 mm	100 mm
Weight	2.7 kg	4.4 kg
Length (without Valve)	46 cm	52 cm
Length (with Valve)	54 cm	58.5 cm
Painting	Powder Coating	Powder Coating
Thread	M18x1.5	M25x2
Stamped as	Breathing Gas	Breathing Gas



POWERLIGHT I



PARAMETERS / SPECIFICATIONS

- Materials:
 - T6061 aluminum alloy CNC machine made
 - Type III hard-anodized surface finish
- Light source: Cree high intensity XP-L HI LED chip
- LED Life: 50000 hrs
- Light output: Max 1200 Lumen
- Color Temperature: 6000K - 6500K
- Spot: 8 degrees
- Deep rate: IPX8 200m/600ft
- Sealed structure: Rubber O-rings
- Switch position and operation: Rear magnetic button (SS-316) switch by pressing
- Functions: 20%-50%-100% (light on)
- Switch on/off: long press/hold 2-3 seconds
- Outputs: Light ON softly and shortly pressing rear button be alternative levels on 20%-50%-100%
- Burning time (on 100%):
 - 90 - 120min (battery type 18650)
 - 180 - 240min (battery type 26650)
- Net Weight (g): 210g (exclude battery)
- Power type: 1 x 18650 or 1 x 26650 Li-ion battery



POWERLIGHT II



PARAMETERS / SPECIFICATIONS

- Materials:
 - T6061 aluminum alloy CNC machine made
 - Type III hard-anodized surface finish
- Light source: Cree high intensity XM-L2 LED chip
- LED Life: 50000 hrs
- Light output: Max 1000 Lumen
- Color Temperature: 6000K - 6500K
- Spot: 12 degrees
- Deep rate: IPX8 100m/300ft
- Sealed structure: Rubber O-rings
- Switch position and operation: Head power indicator light button (SS-316) switch by pressing
- Functions: 20%-50%-100% (light on)
- Switch on/off: Long press/hold 2-3 seconds
- Outputs: Light ON softly and shortly pressing rear button be alternative levels on 20%-50%-100%
- Burning time (on 100%): 90 - 120min (18650)
- Net Weight (g): 180g (exclude battery)
- Power type: 1 x 18650 Li-ion battery



BLADE

THE SCUBA FORCE SIDEMOUNT SYSTEM THAT LEAVES NOTHING TO BE DESIRED...

MODULAR SYSTEM

Modular systems and the highest detail to quality have always distinguished SCUBA FORCE products.

The BLADE system is modular, whether you scuba dive wrecks, beautiful coral reefs or deep cave exploration, the BLADE sidemount system can be easily personalized to your dive.

No compromise! That's why SCUBA FORCE has always paid attention to the highest demand in material quality, relying on European suppliers and having our products manufactured in Europe. No compromise for the highest standards.

BLADE WING - THE CORE PIECE

Made of a ballistic Cordura material, the outer shell provides maximum abrasion resistance and yet is flexible enough to streamline and fit firmly around the diver. The inner bladder is made of rugged nylon and thus offers additional protection against damage. The fittings for the inflator and the dump valve are ultrasonically welded to the bladder making them highly robust. European high-tech manufacturing.

Overall, the BLADE wing has three inflator / dump valves connection points. The inflator can be mounted either on the left or right side of the wing. The connection point at the top is for a dump valve that runs over the shoulder. This offers maximum ease of buoyancy and safety.

In technical diving, the upper connection can be closed with an extremely stable blank plug. The blank plug is included in delivery.

In total, the BLADE has 5 Bungee Attachment Loops (three in the upper and two in the lower area). Optimal positioning is thus always guaranteed. On the inside is the attachment strap, where the wing can be attached to the harness. Moving the wing up or down is done within a matter of seconds.

BUTPAD

In addition, the BLADE wing has two reinforced attachment points in the lower area, which can be easily accessed via a zipper. Here the but pad or a pouch can be easily mounted. To protect the inner bladder, we have added extra protection against the bookscrews.



BLADE SOFT PAD

The Blade Comfort Harness and the Blade Tech Harness are mounted directly on the BLADE SOFT PAD.

This completely new developed pad is equipped with a total of six weight pockets with a total capacity of 12 kg. The pockets are located on the left and right of the spine and are easy to reach without dismantling the BLADE system. Annoying pressure points with higher amounts of lead weights, for example when using a dry suit, is therefore a thing of the past. The two-sided arrangement also offers the possibility to influence the trim.

On the left and right side of the soft pad are universal mounting points for argon cylinders or battery cylinders.



BLADE COMFORT

...FOR THOSE WHO LIKE IT A BIT MORE COMFORTABLE

- The Blade Comfort Harness is mounted directly on the BLADE Soft Pad.
- The harness is based on our long proven SCUBA FORCE Cobra system.
- The adjustable buckles are made from temperature-resistant polymer and have a safety mechanism which only allows them to be opened with two fingers.
- To ensure maximum comfort, the SCUBA FORCE shoulder pads are mounted on the harness.
- The shoulder straps can be simply extended or reduced in length within seconds.
- Robust webbing made in Germany and with German quality control for maximum safety and performance.

SMALL DETAILS CAN MAKE BIG DIFFERENCES.



BLADE TECH

...ROBUST YET COMFORTABLE

Just like the comfort harness, the BLADE TECH harness is mounted directly on the soft pad. Thus, the same comfortable weight integration system is available.

At the front, however, the BLADE TECH reveals its field of application, this is about technical diving with the highest loads.

No compromise! For maximum safety and performance we use German quality materials. The German made webbing runs over the shoulders and with the attached metal accessories the BLADE TECH is everything the technical sidemount diver desires.



BLADE PURE

...FOR THE SIDEMOUNT PURISTS

The BLADE system can also be combined with a PURE Harness. Our aimed is at the purist of sidemount divers, the minimalistic sidemount diver.

The BLADE Pure Harness is configured via an upper and lower plate.

The BLADE wing is simply attached to the plates via two bookscrews.

AS SIMPLE AS IT GETS: THE BLADE PURE!

BOOK SCREWS

Book screws can be used to attach a wing to a backplate or to anchor an accessory to a backplate.



SLIDING D-RING

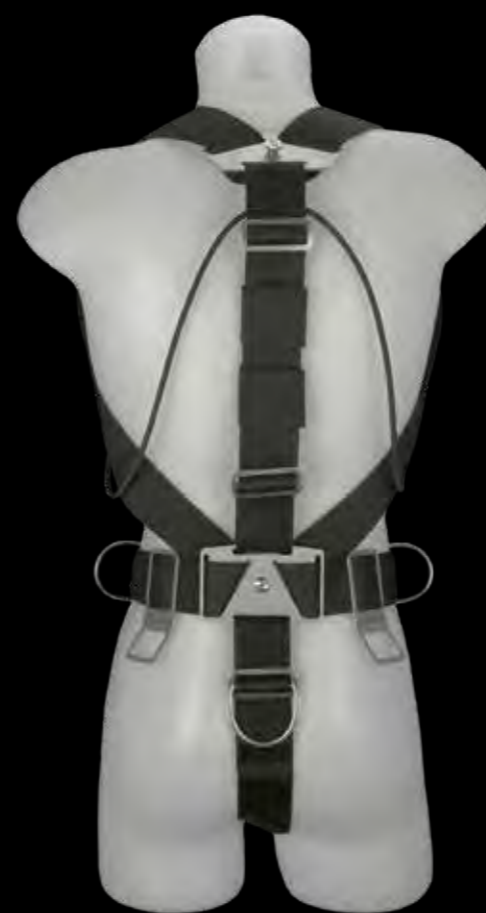
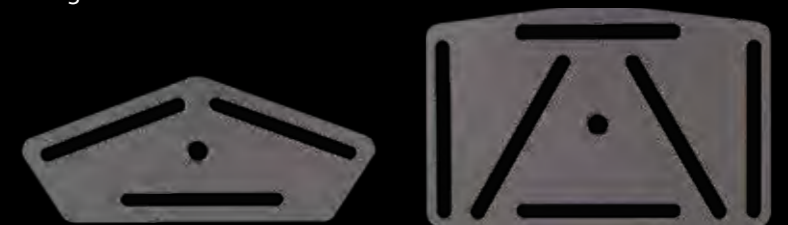


SIDEMOUNT TANK HOLDER



ESSENTIAL PLATES

With the Essential Plates, a purist sidemount harness can be easily configured.



STAGE-RIGGING KIT

Complete Stage-Rigging Kit including stainless steel hose clamp with nylon coating, cylinder holder and rubber stage straps. The stage straps are also available separately.

- Stage-Rigging Kit 40 cuft
- Stage-Rigging Kit 80 cuft

STAGE STRAP ELASTIC

The SCUBA FORCE Elastic Stage Strap is a fabric elastic strap to hold your hoses on your stage cylinders in position. Available for 40 cuft and 80 cuft stages. The straps have a tab to help hose stowage.



STAGES STRAPS RUBBER

Made of high quality rubber. Available for 40 cuft and 80 cuft. Each set consists of two pieces, one including a sewn loop, which significantly improves handling while using thick gloves.

- Stage Straps Rubber 40 cuft
- Stage Straps Rubber 80 cuft



ARGON STRAPS BACKPLATE

For safe mounting on the backplate. Integrated anti-slip pad made of rubber ensures the secure fixation of the cylinder. A Slight deviation of the cylinder size is possible thanks to adjustable Velcro.

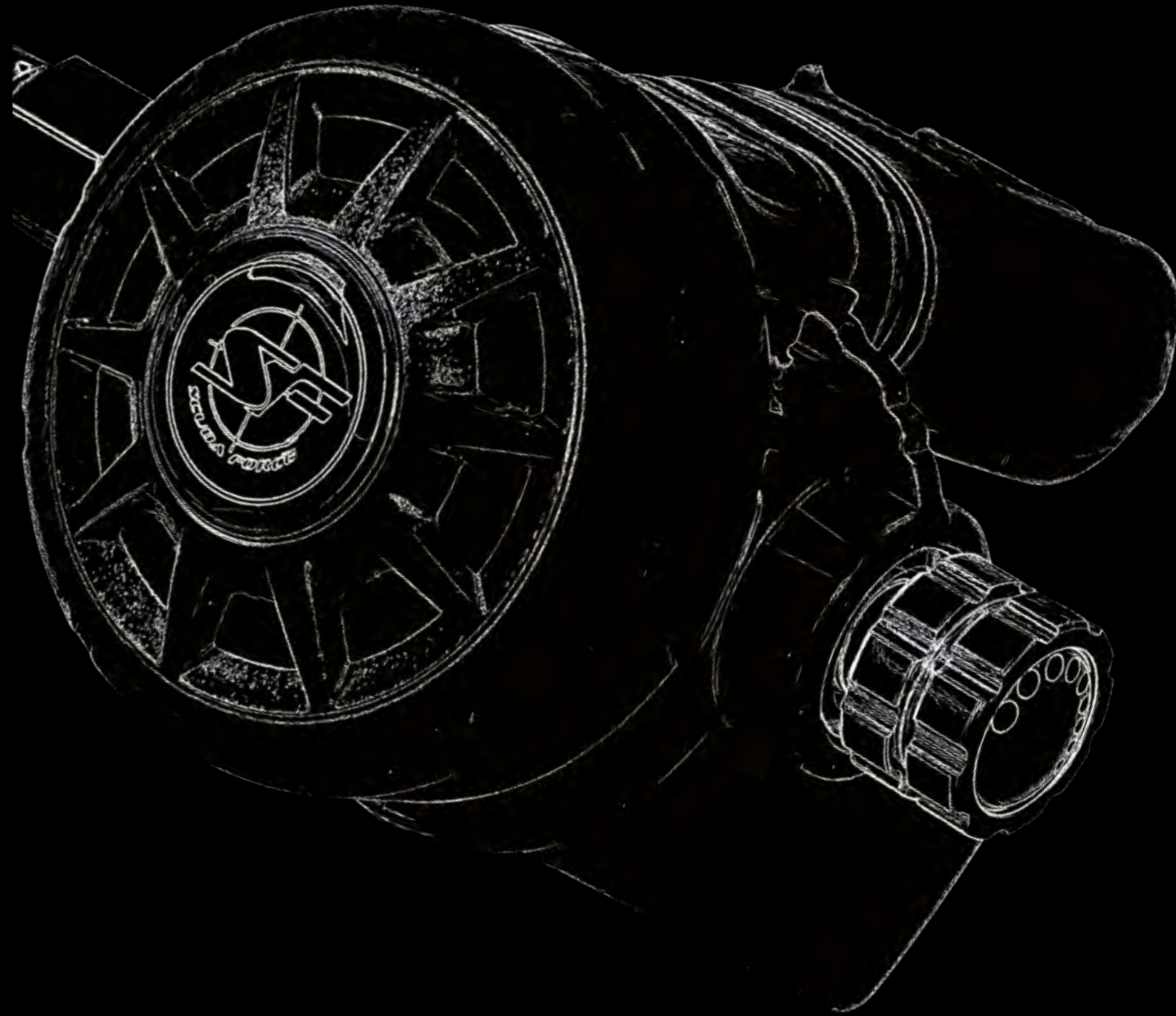
- 0.85 liter / 6 cuft
- 1.5 liter / 14 cuft

ARGON STRAPS DOUBLE DEVICE

1.5 L / 14 CUFT

For secure attachment of the argon cylinder to the double unit. Suitable for argon cylinders 1.5 - 3 liters and 14 cuft (Alu).

- 140 mm double unit
- 171 mm double unit



4 BASIC COMPONENTS

... ARE ASSEMBLED IN DIFFERENT SETS TO ACHIEVE A PERFECT PERFORMANCE!

SCUBA FORCE BLACK DEVIL REGULATORS

The SCUBA FORCE high-performance regulators are tested under the harshest conditions around the world. They are the best choice for anyone looking for reliability and comfort. In addition, the regulators offer sophisticated design and optimal configuration possibilities.



BLACK DEVIL REGULATOR 2ND STAGE

The SCUBA FORCE Black Devil Regulator 2nd Stage is a pneumatically balanced 2nd stage for superior performance even in deeper depths. Adjustable venturi control to improve breathing. Diver adjustable inhalation resistance. Cover made of anodized aluminum. Optimized for use in cold water, through metal ribs in the connection area ideal heat exchange. Compact size with large exhaust deflector. Ergonomically shaped silicone mouthpiece. Marine brass, stainless steel spring and rocker arm. Excellent breathability at any depth.

FEATURES

- Pneumatically balanced design for superior performance at depth.
- Diver adjustable control knob for gas flow adjustment.
- Venturi control assist for excellent work of breathing.
- Large exhaust valve for minimal exhalation effort.
- Marine brass, stainless steel spring and pivot lever.
- Excellent breathing comfort at any depth
- Color: Black and Yellow

BLACK DEVIL FIRST STAGES

All SCUBA FORCE's Black Devil Regulators 1st Stage are overcompensated diaphragm regulators. They have a perfect breathing comfort - even at greater depths. Outstanding and reliable performance for the demanding needs of technical and cold water dives.



SPECIFICATIONS BLACK DEVIL SM

- 5 low pressure (3/8" - 24 UNF) ports (SM) (1x in the swiveling turret)
- Optimal hose routing for doubles and stage cylinders
- Rotating head



SPECIFICATIONS ALL MODELS

- Made of corrosion-resistant brass, nickel plated and chrome plated.
- The integrated cold water protection kit keeps the 1st stage clean and dry.
- Medium pressure 9.5 - 10.2 bar (135-145 PSI).
- Din 300 bar.
- 2 High pressure ports (7/16"-20 UNF)

SPECIFICATIONS BLACK DEVIL TECH

- 4 low pressure (3/8" - 24 UNF) ports
- Optimal hose routing for both singles and doubles

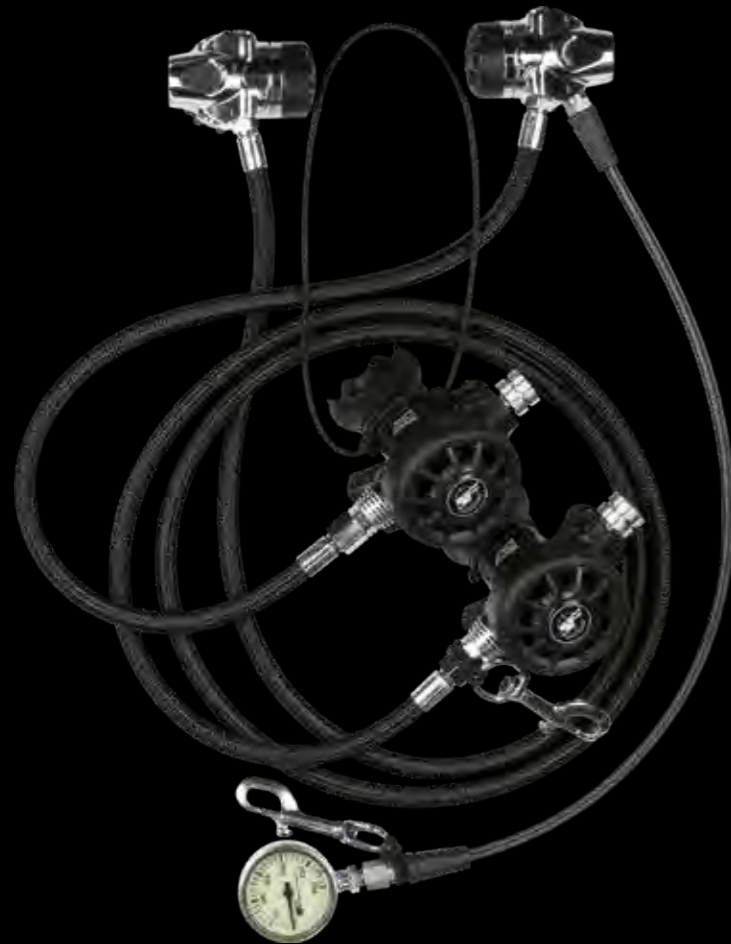


SPECIFICATIONS PRO

- 6 low pressure (3/8" - 24 UNF) ports
- Optimal hose routing for both singles and doubles and stage cylinders

BLACK DEVIL REGULATOR SETS

... ARE ASSEMBLED TO ACHIEVE A PERFECT PERFORMANCE!



TWIN TEC SET I

The SCUBA FORCE regulators provide excellent breathing and perfect performance in cold water as well as offering optimal configuration options for different applications.

The sets are available completely configured with Scubaflex hoses in optimal lengths and include accessories such as bolt snaps, bungees and 90° angle adapters.

THE TWIN TEX SET I CONSISTS OF

- 2x Black Devil TEC 1st Stage
- 2x Black Devil 2nd Stage
- 1x Scubaflex 210 cm LP
- 1x Scubaflex 56 cm LP
- 1x SCUBA FORCE SPG 300
- 1x Scubaflex 56 cm HP
- 2x Bolt Snap 90 mm
- 1x Necklace
- 1x Regulator Bag

The set is configured for use with double cylinders.

TWIN TEC SET II

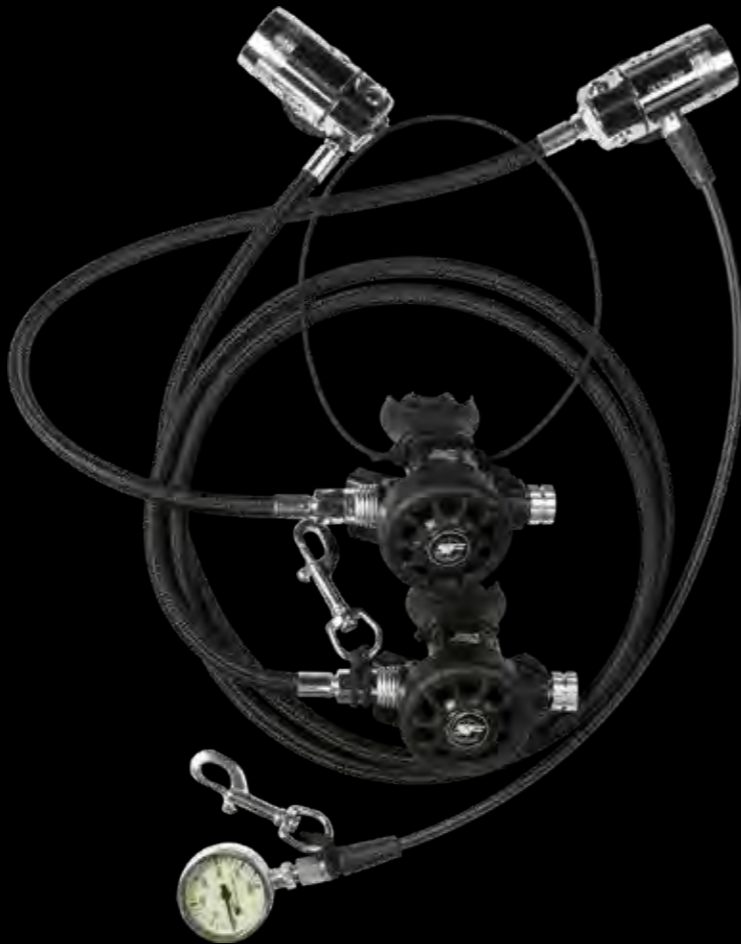
The SCUBA FORCE regulators provide excellent breathing and perfect performance in cold water as well as offering optimal configuration options for different applications.

The sets are available completely configured with Scubaflex hoses in optimal lengths and include accessories such as bolt snaps, bungees and 90° angle adapters.

THE TWIN TEX SET II CONSISTS OF

- 2x Black Devil SM 1st Stage
- 2x Black Devil 2nd Stage
- 1x Scubaflex 210 cm LP
- 1x Scubaflex 56 cm LP
- 1x SCUBA FORCE SPG 300
- 1x Scubaflex 56 cm HP
- 2x Bolt Snap 90 mm
- 1x Necklace
- 1x Regulator Bag

The set is configured for use with double cylinders.



TWIN TEC SET III

The SCUBA FORCE regulators provide excellent breathing and perfect performance in cold water as well as offering optimal configuration options for different applications.

The sets are available completely configured with Scubaflex hoses in optimal lengths and include accessories such as bolt snaps, bungees and 90° angle adapters.

THE TWIN TEX SET III CONSISTS OF

- 2x Black Devil PRO 1st Stage
- 2x Black Devil 2nd Stage
- 1x Scubaflex 210 cm LP
- 1x Scubaflex 56 cm LP
- 1x SCUBA FORCE SPG 300
- 1x Scubaflex 56 cm HP
- 2x Bolt Snap 90 mm
- 1x Necklace
- 1x Regulator Bag

The set is configured for use with double cylinders.

SIDEMOUNT SET CONSISTS OF

- 2 x Black Devil Sidemount 1st stage
- 2 x Black Devil 2nd stage
- 90° LP angle
- Scubaflex 210 cm LP black
- Scubaflex 62 cm LP black
- 2 x Scuba Force pressure gauge 300 bar black
- 2 x Scubaflex 20 cm HP black
- 2 x Scubaflex 20 cm IFH black
- Bolt Snap 90mm
- Necklace
- Scuba Force regulator bag

STAGE SET CONSISTS OF

- Black Devil Sidemount 1st stage
- Black Devil 2nd stage
- 100 cm Scubaflex hose
- Scuba Force gauge 300 bar
- 15 cm HP Scubaflex hose black
- Scuba Force regulator bag

Configured for use on stage cylinders.



BLACK DEVIL REGULATOR SETS

... ARE ASSEMBLED TO ACHIEVE A PERFECT PERFORMANCE!



RECREATIONAL REGULATOR SET I

The SCUBA FORCE regulators provide excellent breathing and perfect performance in cold water as well as offering optimal configuration options for different applications.

The sets are available completely configured with Scubaflex hoses and come with a regulator bag.

SET I CONSISTS OF

- Black Devil TEC 1st stage
- 2x Black Devil 2nd stage
- 74 cm black Scubaflex hose for the main regulator
- 100 cm neon yellow Scubaflex hose for the octopus
- SCUBA FORCE regulator bag

The Set is configured for use with single cylinders.



RECREATIONAL REGULATOR SET III

The SCUBA FORCE regulators provide excellent breathing and perfect performance in cold water as well as offering optimal configuration options for different applications.

The sets are available completely configured with Scubaflex hoses and come with a regulator bag.

SET III CONSISTS OF

- Black Devil PRO 1st stage
- 2x Black Devil 2nd stage
- 74 cm black Scubaflex hose for the main regulator
- 100 cm neon yellow Scubaflex hose for the octopus
- SCUBA FORCE regulator bag

The Set is configured for use with single cylinders.

RECREATIONAL REGULATOR SET II

The SCUBA FORCE regulators provide excellent breathing and perfect performance in cold water as well as offering optimal configuration options for different applications.

The sets are available completely configured with Scubaflex hoses and come with a regulator bag.

SET II CONSISTS OF

- Black Devil SM 1st stage
- 2x Black Devil 2nd stage
- 74 cm black Scubaflex hose for the main regulator
- 100 cm neon yellow Scubaflex hose for the octopus
- SCUBA FORCE regulator bag

The Set is configured for use with single cylinders.



REGULATOR BAG

600 Denier nylon fabric, inside with PVC coating. Complete with thick padding and Velcro straps inside. Comes with carrying handles and detachable / adjustable shoulder strap, with padding. Measures: 34 cm x 11.5 cm / 13.3" x 4.5" .

REGULATOR SERVICE KIT WITH BAG

A tool kit for professionals. Design and composition fits almost all current brands. For first and second stages.

2ND STAGE ADJUSTMENT TOOL

Testing and adjustment device with gauge for measuring and adjustment of the response resistance on the regulator. display up to 15 bar / 200 PSI connection directly at medium pressure hose. With shaft for setting the 2nd stage under pressure.

MEDIUM PRESSURE TEST GAUGE

Standard inflator connection for quick check of the middle pressure of the 1st stage. Scale in BAR and PSI.



SCUBA FORCE - PRESSURE GAUGES

ROBUST, RELIABLE AND PERFECTLY DESIGNED

SCUBA FORCE SPG'S

The SCUBA FORCE pressure gauges are made of high quality brass and chrome, offering perfect protection against corrosion.

The brass case with tempered glass offer extreme durability and can be used with or without the rubber housing, which is particularly appreciated by technical divers.

The double-welded Bourdon-Beryllium tube offers a high degree of measurement, accuracy, reliability and remains calibrated even after use in the harshest environments.

The diameter of the pressure gauge is 52 mm (2 inches). Viton O-rings are included as standard. Available for different pressure ranges, for use with oxygen and with white or black face.

- SCUBA FORCE SPG - 360 bar
- SCUBA FORCE SPG Oxygen - 360 bar
- SCUBA FORCE SPG - 300 bar
- SCUBA FORCE SPG black 300 bar



SLIM LINE SPG'S - SF2 SMALL AND NICE

The Slim Line pressure gauges are included with the SF2 ECCR, i.e. in an area where measurement accuracy and reliability have top priority.

Made from a piece of nickel-plated brass and equipped with a Beryllium copper tube ensures that the Slim Line pressure gauge has a compact, low profile design.

The polycarbonate, Parallax lens is extremely durable and offers excellent clarity for maximum readability.

Diameter 45 mm (1.5").

- SPG Slim Line SF2 diluent (incl. Swivel) / incl. 80cm or 90cm HP hose and cover
- SPG Slim Line SF2 diluent black (incl. Swivel) / incl. 80cm or 90cm HP hose and cover
- SPG Slim Line SF2 oxygen (incl. Swivel) / incl. 80cm or 90cm HP hose and cover



THE POPULAR SCUBA FORCE SPG'S ARE AVAILABLE WITH PSI DISPLAY AS WELL

- SCUBA FORCE SPG black - 5000 PSI
- SCUBA FORCE SPG - 5000 PSI
- SCUBA FORCE SPG Oxygen Slim Line - 5000 PSI



SCUBA FORCE COMPASSES

SCUBA FORCE COMPASS PRO

The SCUBA FORCE Compass Pro is a high quality liquid-filled Diving Pro Compass with bungee mounts.

FEATURES

- Exceptional tilt allows the compass to be held at an angle of up to 30° and still respond quickly and accurately
- High strength magnets for fast, positive action
- Filled with liquid silicone
- Firm-grip ratcheting bezel
- Easy to read lubber line
- Top or side reading
- Bold numbers for ease of reading
- Luminescent floating dial
- Weight: 80 gr / USA: 2.82 oz



SCUBA FORCE COMPASS

FEATURES

- Oil filled
- Top or side view
- Very fast response magnets
- Luminescent floating dial
- Bungee cords molded completely through the bezel ring cannot be rubbed off





SCUBA FORCE BLACK DEVIL 55

PERFECTLY STYLED DONUT WING

No air traps, low flow resistance, simple reach from the dump valve and inflator. The Black Devil 55 leaves no wish unfulfilled. Best suited for use with large sets of doubles plus several stages up to Win 18 liters. The SCUBA FORCE Black Devil Donut Wing 55 sets standards in quality and performance.

All components of the SCUBA FORCE Black Devil 55 are made of the highest quality materials. This starts with the textile inner bladder, which is very sturdy and incredibly durable. The outside bladder is made from a ballistic Cordura, which is equally durable and robust. Rounding out the package is a high quality metal K-inflator.

The Black Devil 55 is equipped with all components from the SCUBA FORCE wing series which can be combined perfectly. This applies to all of the wings from the house of SCUBA FORCE. We offer perfect modular system according to individual requirements and needs.

SCUBA FORCE BLACK DEVIL 32

MONO WING

This two-shell donut wing with 15 liters lift (approx. 32 lbs buoyancy) is made of high quality materials and is particularly functional by its good handling.

The all-round zipper allows you to remove the inside bladder completely. The textile inner bladder is especially robust and hard-wearing, as well as the outer shell of ballistic Cordura. The metal inflator in K-shape rounds the high-quality overall equipment.



SCUBA FORCE BLACK DEVIL 45

The SCUBA FORCE Black Devil 45 is ideally suited for twin cylinders up to Twin 12 liters.

- Made of the highest quality materials
- Two-shell construction
- Power inflator
- Quick release

SCUBA FORCE BLACK DEVIL RETRACTION

RETRACTION WING

The SCUBA FORCE Black Devil 60 Retraction Wing can be used for double and single cylinders as well as Sidemount configuration.

A classic horseshoe wing with silicone retraction bands for a multi functional application. Textile interior bladder. Round zipper. Ballistic Cordura as outer material and high-quality metal inflator.

As with all SCUBA FORCE Wings the Black Devil Retraction is designed with quality and function in mind.

The retraction straps are made of high quality silicone elastomer (Bungees) and offer several advantages.

- First they prevent unnecessary air in the wing. The Bungees support the draining of the air, but don't prevent inflation by mouth (oral inflating), neither above nor under water.
- The profile of the wing can be reduced to match the width of the diver, thus resulting in less drag.
- By adding or subtracting bungees, the diver can adjust their trim both horizontally and vertically.
- Because of the bungees, the SCUBA FORCE Black Devil Wing can be used for single and twin cylinders.
- Of course the Black Devil Wing can also be used without bungees.
- The dump valve is located at the optimum height on the left side of the wing, and easily found by the diver in the event of an emergency.



COBRA GT HARNESS COMFORT

The SCUBA FORCE Cobra GT Harness Comfort combines safety aspects and wearing comfort in an unexpected perfection. It is a comfortable and safe companion for all divers who not settle for the „standard“.

COBRA GT BUCKLES

- 2 Cobra GT buckles - male adjustable
- Patented safety mechanism max. tensile load of 900 kg (6,509 lbs/ft.)
- Made of very strong polymer
- Ideal for salt water use
- Offers you an easy entry and exit
- Unintentional open up is impossible

CROTCH STRAP

- Width: 50 mm (1.969")
- The soft material guarantees a high comfort
- Excellent hold without equipment hindrance
- Two D-rings (e.g. for scooter)
- Elastic Hose Holders
- The Harness can be adjusted and positioned in a few seconds
- Easy and secured fixing of accessories
- Two adjustable bent D-rings in the area of the shoulders
- Two fixed D-rings in the area of the hips each side



COBRA GT HARNESS TECH

Convenience and safety are just a few advantages of the SCUBA FORCE Cobra GT Harness Tech. Designed for the needs of ambitious tech divers.

With one hand the dual button safety mechanism is simple to use while preventing unintentional release. The SCUBA FORCE Cobra Harness Tech is the ideal and safe design for serious tech divers looking for safety, high load capacity and reliability.

COBRA BUCKLE

- 1 Cobra GT buckle - male fix
- Made of very strong polymer
- Patented safety mechanism max. tensile load of 900 kg (6,509 lbs/ft.)
- Ideal for salt water use
- Offers you an easy entry and exit
- Accidental opening is impossible
- Installation on left and right side possible
- Individual positioning of the height

CROTCH STRAP

- Width: 50 mm (1.969")
- High comfort, soft material
- Two integrated D-rings
- Excellent hold without equipment hindrance
- Two D-rings (e.g. for scooter)

HARNESS

- Elastic Hose Holders
- The Harness can be adjusted and positioned in few seconds

EASY AND SAFE FIXING OF ACCESSORIES

- Two bent D-rings in the area of the shoulders
- Fixed D-ring on left side



TECH HARNESS BLACK DEVIL

The SCUBA FORCE Tech Harness Black Devil fits the Black Devil line - the DIR conform tech harness.

It is kept very simple and provides maximum safety during your dives.

THE COMPLETE SET CONTAINS

- 3,6 meter webbing with center hole
- SCUBA FORCE buckle - stainless steel
- 6x rubber band
- crotch strap with two integrated D-rings (perfect for scooters)
- 2x bent D-ring
- 2x D-ring straight
- 9x belt stopper

BLACK DEVIL WEIGHT POCKET SYSTEM WP500

This compact weight system is made of robust cordura and consists of two outer pockets and two integrated weight pockets that are secured by wide Fastex buckles that offers great security with simple operation - even while wearing thick gloves. With this system you are ready for every type of diving.

- Flap pocket: the inner bag is secured by a wide Fastex buckle. Fastening by means of a stable Velcro strap, which prevents slippage. Fully removable. Storage space for 4 - 5 kg soft lead / 4 kg hard lead per bag.
- Exterior: fastening with the aid of two quick release buckles on the jacket or wing: guarantees fast and easy ejection of the entire bag in case of emergency.



BLACK DEVIL WEIGHT POCKET SYSTEM SMALL

Small padded bag with multi-functional insert. Either as counter-leads on single cylinders or as lead-blades for wings. Capacity 2 - 3 kg (whether soft or hard lead). With Fastex buckles.

SCUBA FORCE LINE CUTTER

- Ultra-sharp
- Replacement blade
- Velcro Strap to secure the Line Cutter in place



BLACK DEVIL SKELETON BACKPLATE

The SCUBA FORCE Black Devil Skeleton Backplate combines design with a maximum of convenience. Its shape is directly inspired by high quality backpacks.

- Weight: 2,3 kg (5.07 lbs)
- Material: stainless steel 3 mm (0.12"), powder-coated.
- Length: 41cm (16.14")

OPTIMIZED DIVISION OF FORCES

- Expanded width compared to similar backplates
- Innovative shape offers an optimized division of forces as well as an improved wearing comfort (also applicable for double cylinder configurations)
- Center of gravity is close to body axis which allows stowage of heavy P-weights



LONG / HEAVY & LONG

The Black Devil Skeleton Backplate is also available in 2 more versions: Long and Heavy Long

This backplate is about 7 cm (2.75") longer than similar backplates. The difference: The supporting point lays on the haunches. The optimized division of forces enables you to wear extremely heavy devices easily.

	LONG	HEAVY & LONG
Weight:	2,9kg (6.04lbs)	5,6kg (12.35lbs)
Material:	3mm (0.12")	6mm (0.24")
Length:	48cm (18.9")	48cm (18.9")

OPTIMIZED DIVISION OF FORCES

- Expanded width compared to similar backplates
- Innovative shape offers an optimized division of forces as well as an improved wearing comfort (also applicable for double cylinder configurations)
- Center of gravity is close to body axis which allows stowage of heavy P-weights



SINGLE CYLINDER ADAPTER WITH TENSIONING STRAPS

Made of saltwater resistant stainless steel for a stable mounting of a single cylinder on one backplate. Includes two tensioning straps with stainless steel buckle and screw set. The adapter by itself without straps is also available.

SOFT CYLINDER BAND WITH STAINLESS STEEL BUCKLE I

Solid, stiffer webbing material; approx. 50 mm wide; stable anti-slip pad; stainless steel buckle.

SOFT CYLINDER BAND WITH STAINLESS STEEL BUCKLE II

Solid, stiffer webbing material; approx. 50 mm wide; stable anti-slip pad; easy-to-use stainless steel closure.

STANDARD STEEL PLATE

The SCUBA FORCE Standard Steel Backplate has a material thickness of 3 mm (0.12") and a total weight of 2,3 kg (5.07 lbs).

It is made of saltwater resistant, stainless steel.

Optimal positioning of the double cylinders using the combination of the 3 holes and the lower slot.

Holes in regularly spaced intervals enable you to fix your Argon-Set or other accessories without any problems.



STANDARD ALU PLATE

The SCUBA FORCE Standard Aluminum Backplate has a material thickness of 3 mm (0.12") and a total weight of 0,7 kg (1.54 lbs). Thanks to its minimal weight it is your ideal companion. It is especially suitable for traveling by plane.

The hole pattern on the backplate allows you to secure your equipment for the optimal position and security.

- Length: 40 cm (15.75")

STORAGE PACK

The SCUBA FORCE Storage Pack is specially made for the Standard Backplates.



BLADE SIDEMOUNT BACKPLATE

The Blade Sidemount Backplate is available in two different materials:

- Stainless Steel - saltwater resistant
 - 2.9 kg (6.4 lbs)
 - 3 mm (0.12") thick
- Aluminum:
 - 1,2 kg (2.65 lbs)
 - 3 mm (0.12") thick

Both are available in Black or Red coating.

HIGH-QUALITY MATERIALS
IN THE BEST MANUFACTURING QUALITY

SCUBA FORCE OFFERS A WIDE RANGE OF ADAPTERS THAT MAKE DIVING SAFER AND MORE COMFORTABLE.



OVER PRESSURE VALVE
1st Stage 3/8-inch M



ADAPTER
3/8-inch M = 9/16-inch M



SHUT OFF DELUXE 1ST STAGE
3/8-inch M = 3/8-inch F



SHUT OFF DELUXE
9/16-inch M = 9/16-inch F



QUICK DISCONNECT MALE
9/16-inch F



QUICK DISCONNECT
9/16-18 F



LP MANIFOLD
3 Port 3/8-inch F = 1 Port 3/8-inch M



Y-BLOCK
2 Port 3/8-inch F = 1 Port 9/16-inch M



90 DEGREE SWIVEL ADAPTER
LP 2nd Stage: 9/16-inch M x 9/16-inch F



110 DEGREE SWIVEL ADAPTER
LP 2nd Stage: 9/16-inch M x 9/16-inch F



ADAPTER
1stStage 1/2-inch M = 3/8-inch F



COUPLER
Joins LP Reg Hoses 9/16-inch w/ 3/8-inch fittings



110° PIVOT-SWIVEL
LP 1st Stage: 3/8-Inch M = 3/8-Inch F



360° REGULATOR SWIVEL
LP 2nd Stage: 9/16-Inch F = 9/16-Inch M

SCUBA FORCE OFFERS A WIDE RANGE OF STAINLESS STEEL ACCESSORIES.

Made of high quality and salt water resistant stainless steel with excellent quality.



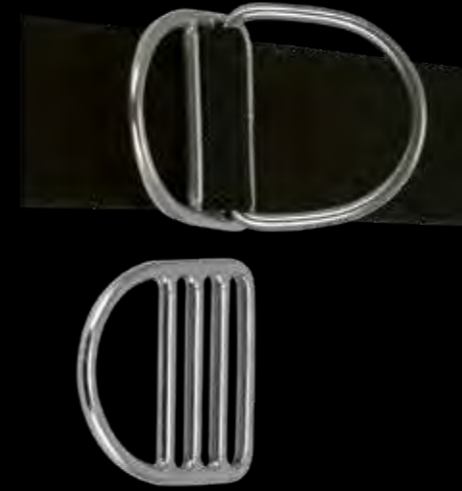
BOLT SNAPS

- Bolt snap, L = 62 mm
- Bolt snap, L = 76 mm
- Bolt snap, L = 90 mm
- Bolt snap (Cold Water), L = 109 mm
- Bolt snap, L = 120 mm



DOUBLE ENDER

- Double ender, L = 100 mm
- Double ender, L = 120 mm



SIDEMOUNT SLIDING D-RING



SCUBA FORCE BUCKLE

- Stainless Steel
- Buckle for 50 mm webbing



CARABINER

- 5.0 cm
- 6.9 cm



QUICK LINK (LOCKABLE)

- 4.1 cm
- 5.0 cm
- 6.0 cm



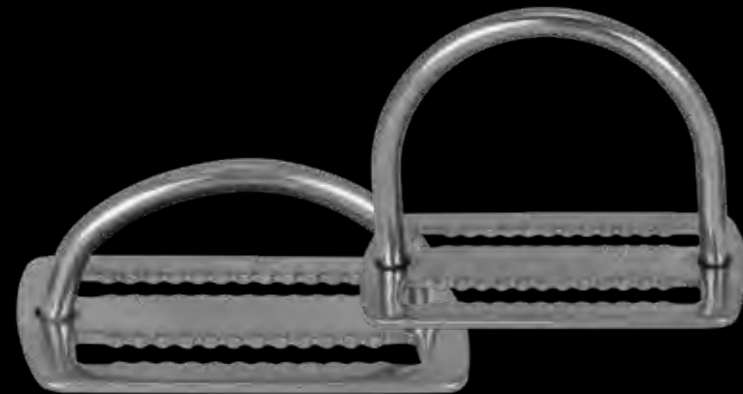
COMFORT CLIP



BOOK SCREWS FOR 3MM PLATE

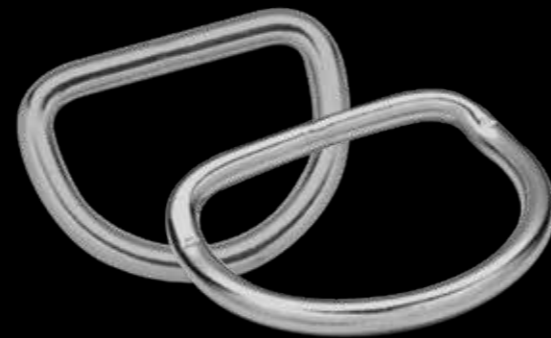


SIDEMOUNT TANK HOLDER



BILLY-RINGS

- Billy Ring small for 50 mm webbing
- Billy Ring large for 50 mm webbing



D-RINGS STRAIGHT / BENT

- D-Ring 50/6 mm
- D-Ring 50/5 mm bent



TRIGLIDE

- Triglide for 50 mm webbing
- Triglide with teeth for 50 mm webbing



**D-RING CLIP FOR 25 MM D-RING
D-RING 25 MM WELDED**

**SCUBA FORCE HOSES
LOW AND HIGH PRESSURE**



SCUBAFLEX HOSES

Our SCUBAFLEX hoses offer a high degree of flexibility and can be perfectly configured because they have no twist at all. The metal connections are produced on the most accurate way and can be easily connected.

SCUBAFLEX low pressure hoses are available from 10 cm to 210 cm and come in 7 different colors: (black, blue, red, green, white, yellow and pink).

SCUBAFLEX HIGH PRESSURE HOSE

The SCUBAFLEX high pressure hoses come with a quality soul from Germany which is manufactured according to the highest industrial standards. Our high pressure hoses are always black and available in lengths of 10 cm - 90 cm. The fittings are mechanically pressed and manufactured as precisely as with the low-pressure hoses.



SCUBAFLEX INFLATOR HOSE

The SCUBAFLEX inflator hoses also offer maximum flexibility and perfect connections. They are coming in 7 colors as well from 15 cm – 100 cm



RUBBER HIGH PRESSURE HOSES

Rubber High pressure rubber hoses are only available in black and coming in:

- 15 cm - 20 cm - 56 cm - 62 cm - 80 cm - 90 cm

RUBBER HOSES

And of course SCUBA FORCE also offers the complete range of classic rubber hoses.

- Low pressure rubber hoses in BLACK are available in: 55 cm - 62 cm - 75 cm - 150 cm - 210 cm
- Low pressure rubber hoses in YELLOW are available in: 100 cm - 210 cm



RUBBER INFLATOR HOSE

Our rubber inflator hoses are available in black and coming in:

- 15 cm - 20 cm - 25cm - 56 c - 65 cm - 70 cm - 90 cm



SCUBA FORCE TEC SMB

A plus for your diving safety and not only for TECHIES. High quality seams (ultrasonically welded - sewn on edge) combined with excellent features. The TEC SMB can be inflated orally or by a non-locking BC inflator hose. Even in heavy seas air cannot escape from the closed SMB. The narrow design makes both stowing and handling easy.

FEATURES

- Color: Signal Orange or Yellow
- Dimensions 120 cm x 12 cm
- Buoyancy about 4.3 kg
- Quick Release with integrated over pressure valve
- Metal D-ring for attachment
- Non-Locking inflator connection



SCUBA FORCE SMB DELUXE

The DELUXE SMB has both: a non-locking inflator connection as well as a duck valve. Thus, the SMB can be inflated orally, with the inflator or with the second stage. Produced in the same high quality as all of our SMB's

FEATURES

- Color: Signal Orange
- Dimensions 146 cm x 12 cm
- Buoyancy about 4.8 kg
- Quick release with integrated over pressure valve
- Metal D-ring for attachment
- Non-locking inflator connection
- Duck valve
- Storage bag



SCUBA FORCE SPOOL WITH 100MM DOUBLE ENDER

The SCUBA FORCE spools come with a 100 mm Stainless Steel Double Ender and a 30 meters or 45 meters tear-resistant cave line.

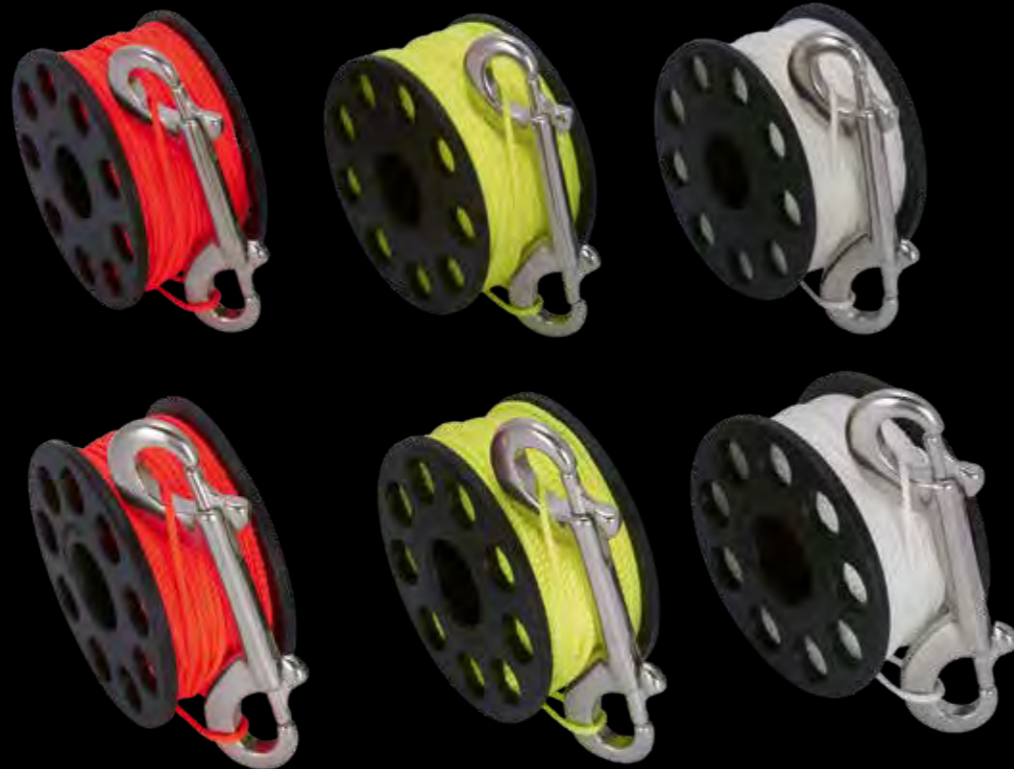
The spools are ideal for cave diving, deco or marker buoy.

COLORS

- Orange
- Yellow
- White

LENGTH

- 45 meters (150 feet) or
- 30 meters (100 feet) or



COLD WATER SPOOL

The SCUBA FORCE Cold Water Spool is ideal for diving in cold water.

- Stainless Steel Double Ender
- Color: white
- Length: 30 meters (100 feet)

SCUBA FORCE COOKIES

The SCUBA FORCE Cookies are 55 mm diameter and come in 4 different colors:

- Yellow
- White
- Orange
- Glow



SCUBA FORCE ARROWS

The SCUBA FORCE Line Arrows are 65 mm diameter and come in 4 different colors:

- Yellow
- White
- Orange
- Glow



SCUBA FORCE X-REEL

Quality and design made for the extreme: wrecks and caves! The SCUBA FORCE X-Reel with double ender - uncomplicated, reliable and long-lasting. The perfect tool to implement buoys, salvage bags as well as to bridge distances in caves and wrecks.

AVAILABLE IN TWO VERSIONS

- 60 m (690g)
- 121 m (870g)

FEATURES

- Optimized grip
- Fast operation with large dry gloves
- Simplified access to the spool
- Reduces danger of entanglement
- Knurled screw: easy use even under extreme visibility conditions
- Optimized weight distribution
- Maintenance-free operation
- Material: aluminum/ delrin
- Double ender: stainless steel



SCUBA FORCE DELUXE WETNOTES

The ultimate tool for underwater: Wetnotes. The SCUBA FORCE Deluxe Wetnotes offer you plenty of room to plan dives, drawings, run times tables, or to communicate with your dive buddy.

- Size: 12 x 19.8 cm
- 25 pages of underwater paper
- Cordura cover with viewing window for runtime etc.
- Second viewing window inside
- 3 x Runtime Slate (can be used several times)
- Flexible bookmark
- Graphite pencil with elastic band



SCUBA FORCE VISION II

Called the best fitting dive mask on the market, SCUBA FORCE VISION II is one of the most popular dive masks in the world.

The dual lens design of SCUBA FORCE's VISION II offers a low volume and provides excellent field of view, both horizontally and vertically.

All VISION II are coming with a comfortable and adjustable neoprene mask strap.

Available in two versions: CLEAR and BLACK Silicone.

Colors: red, blue, black and pink



NEOPRENE MASK STRAP

All SCUBA FORCE masks are delivered with our adjustable and comfortable neoprene mask strap. The strap is available separately and fits to the most models in the market.



PROTECTION BOX

All SCUBA FORCE masks are delivered in a low profile protection box.



SCUBA FORCE ONE

The SCUBA FORCE ONE frame-less mask offers a nearly unlimited visibility, a low volume and a perfect fitting. An extra clear safety glass guarantees a visibility which is certainly one of the most important aspect of any dive. The ultra soft black silicone seals to nearly every face. Because of the frame-less design the SCUBA FORCE ONE is also a perfect redundant mask that fits in every dry suit pocket. As all SCUBA FORCE masks the ONE comes with the adjustable neoprene mask strap.

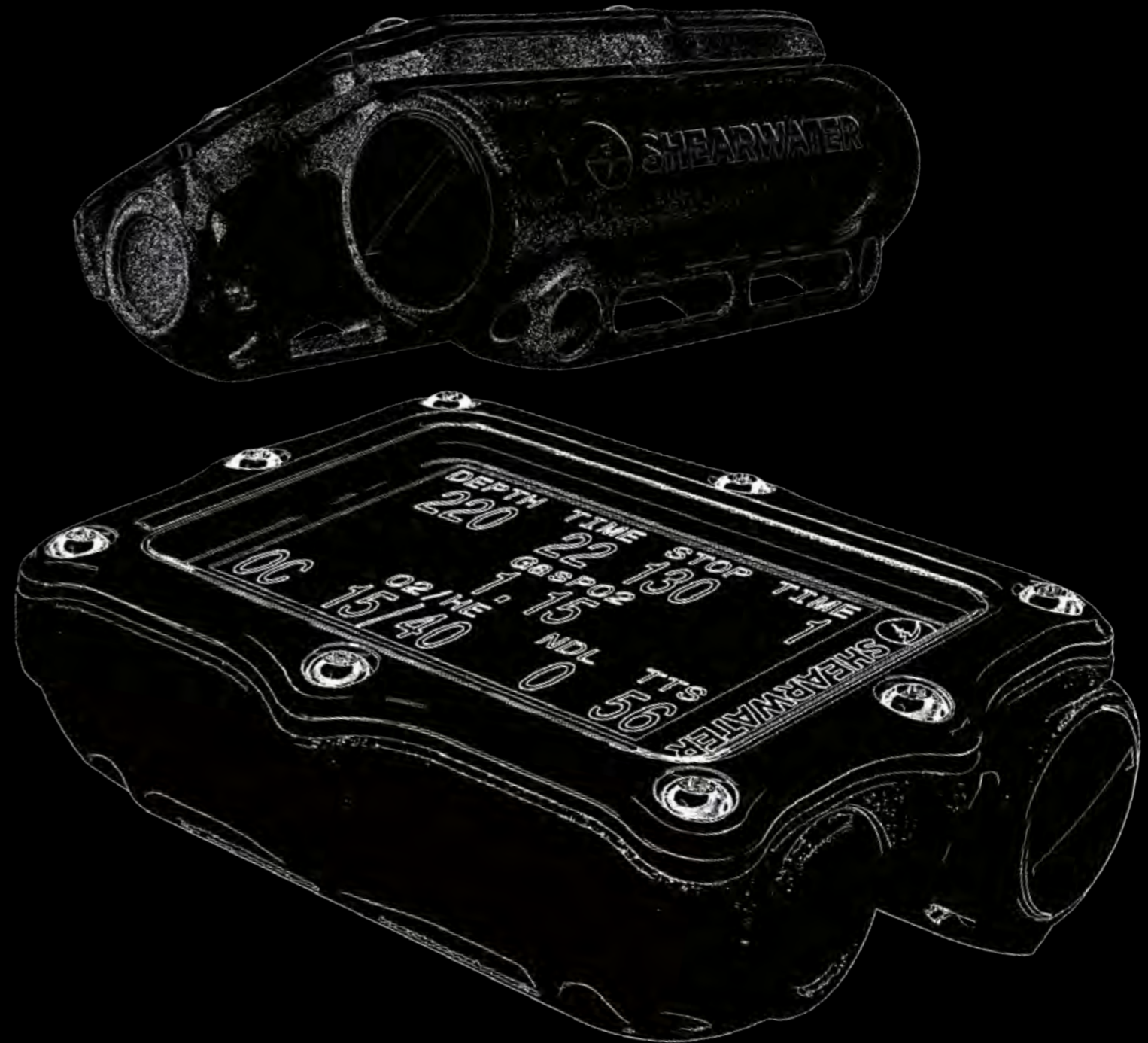


- Optimal fit
- Hardened lenses
- Spring-loaded edge cover
- Wide viewing angle with low volume

- Black silicone
- Neoprene mask strap for optimum and comfortable fit
- Color: black
- Includes protection box

NEOPRENE MASK STRAP

All SCUBA FORCE masks are delivered with our adjustable and comfortable neoprene mask strap. The strap is available separately and fits to the most models in the market.



TERIC
THE WATCH THAT TRANSFORMS YOU

FULL COLOR. HIGH RESOLUTION. AMOLED.

Intuitive controls and menu navigation along with a bright, vivid color display. With a high degree of customization, the Teric brings divers a timepiece and dive computer of unprecedented capabilities.

THE TERIC OFFERS ALL OF THE GREAT FEATURES THAT DIVERS LOVE IN SHEARWATER COMPUTERS AND MORE:

- Rugged construction
- Sapphire crystal
- 30+ hours Dive mode at 100% brightness
- 50+ hours Watch mode at 100% brightness
- Configurable, faster log sampling
- Bluetooth & wireless charging; no custom cables required
- Air Integration - up to 2 transmitters
- Switchable audible and vibration motor alerts
- New Freediving mode
- Optional multi color straps are available



RUGGED CONSTRUCTION

Sapphire crystal window, and 316 stainless bezel & buttons

MULTIPLE STRAP COLORS AVAILABLE

Standard 22 mm strap size compatible with many third-party watch brand providers



OC Recreational

OC Technical

CC / BO

Gauche



Powerful • Simple • Reliable

POWERFUL, SIMPLE, RELIABLE... IS NOW AIR INTEGRATED

SHEARWATER IS PROUD TO INTRODUCE THE NEWEST MEMBER OF THE SHEARWATER FAMILY:

THE PERDIX AI



CYLINDER PRESSURE & GTR

Offering all of the same great features of the Perdix,

- the Perdix AI uses its large, easy-to-read screen to
- clearly display the cylinder pressure as well as your
- gas time remaining (GTR)



OPTIONAL AIR INTEGRATION

The Perdix AI is capable of connecting to either one or two transmitters giving the diver the option to monitor both cylinders or dive sidemount.

TRANSMITTER SPECIFICATIONS

- Battery Type (user replaceable): 3V CR2 Lithium
- Battery Life: 300 Hours
- Depth Rating: 152m / 500ft
- Wireless Mode: Low Frequency RF 38kHz

FEATURES

HIGH RESOLUTION 2.2" DISPLAY: display type full color LED LCD | AA BATTERY (any type): AA Alkaline - 40 hours; SAFT LS14500 - 100 hours | THIN, LOW PROFILE: Contoured design four our thinnest computer yet | INTEGRATED BUNGEE MOUNT: A new option along with our classic strap mounts | DOUBLE O RING SEAL | SIMPLE TO USE: Intuitive and familiar menu structure | 1000-HOUR DIVE LOG | Transfers to your Mac or PC via BLUETOOTH SMART READY | DEPTH RATING: 260m (850ft) | BUHLMANN GF ALGORITHM | SIZE: (WxHxD) 83 x 74 x 39 mm (3.26" x 2.9" x 1.53") | WEIGHT: 154g (0.34 lbs)



Powerful • Simple • Reliable

**THE PERDIX
SLEEK AND SOPHISTICATED**

Merging state of the art manufacturing techniques, innovative engineered materials, and consumer feedback, Shearwater has successfully developed a low-profile, sleekly contoured design without sacrificing features vital to technical divers. It's everything you love about the Petrel dive computer, just smaller.



**POWERFUL, SIMPLE, RELIABLE...
AND SMALLER**



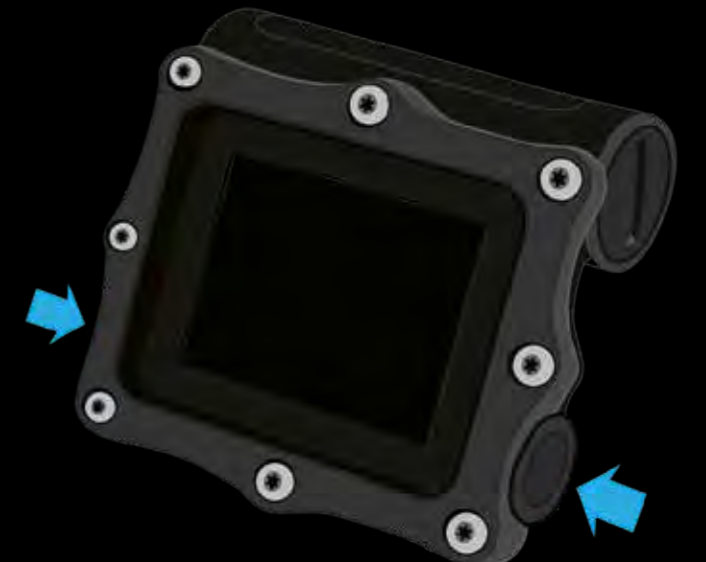
HIGH RESOLUTION, EASY-TO-READ DISPLAY
2.2" display with vivid, enhanced color range and saturation



THIN, LOW-PROFILE DESIGN
30% smaller in volume than the Petrel

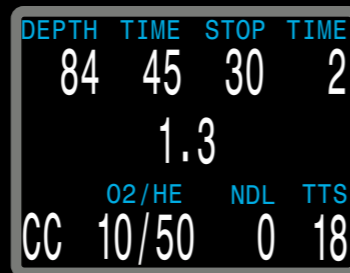


MULTIPLE LANGUAGES
Languages include: English, French, Simplified Chinese, Traditional Chinese, German, Korean and Japanese



TWO BUTTON INTERFACE
Simple to navigate, state-aware menu structure

MULTIPLE DIVING MODES



OC RECREATIONAL
Three gas nitrox computer with features for the serious recreational diving enthusiast. Includes adaptive safety stop and ND L bar graph.

OC TECHNICAL
5 OC gases Trimix enabled by default.

CC / BO
5 OC / 5 CC gases
Trimix enabled
Constant PO2 for closed circuit.

DIGITAL COMPASS
3 axis, tilt compensated, digital compass

FEATURES

HIGH RESOLUTION 2.2" DISPLAY: display type full color LED LCD | AA BATTERY (any type): AA Alkaline - 45 hours; SAFT LS14500 - 120 hours | THIN, LOW PROFILE: Contoured design four our thinnest computer yet | INTEGRATED BUNGEE MOUNT: A new option along with our classic strap mounts | DOUBLE O RING SEAL | SIMPLE TO USE: Intuitive and familiar menu structure | 1000-HOUR DIVE LOG | Transfers to your Mac or PC via BLUETOOTH SMART READY | DEPTH RATING: 260m (850ft) | BUHLMANN GF ALGORITHM | SIZE: (WxHxD) 83 x 74 x 39 mm (3.26" x 2.9" x 1.53") | WEIGHT: 154g (0.34 lbs)



Powerful • Simple • Reliable



Powerful • Simple • Reliable

THE PETREL 2

RUGGED AND RELIABLE

The Petrel 2 is the next generation in rugged and reliable technical diving computers from Shearwater Research. Available with or without Fischer connector, it clearly presents all the information you need to see at a glance. Whether you are diving a rebreather, twins or side mount, you can rely on the Shearwater Petrel 2 during your next expedition. The Petrel 2 Fischer features all the modes of the Petrel 2 and incorporates a Fischer connector for integration into rebreathers for primary or redundant PPO2 monitoring with full decompression.



DIVEMODE

OC Rec – 3 gas recreational computer | OC Tec – Multi gas, trimix decompression computer | CC – Closed Circuit fixed PPO2 | Petrel Fischer – Closed circuit real time monitoring of 1 or 3 O2 sensors | Gauge – Bottom timer with stop watch

FEATURES

User Replaceable AA Battery | Air, Nitrox, Trimix capable | Quick OC bailout from CC | 3 axis, tilt compensated, digital compass | Decompression | Dive Planning | Buhlmann GF algorithm | Optional VPM-B algorithm | Dive Logging | Upgradeable Firmware | Smart Ready Bluetooth Interface

SPECIFICATIONS

Screen Resolution - 320 x 240 QVGA | Display Type - Full color LED LCD | Battery Type - Single AA (any type) | Battery Life AA Alkaline - 35 Hours, SAFT LS14500 100 Hours | Number of Gases - 5 OC / 5 CC | Dive Log - 1000 Hours | Dimensions - 83 x 74 x 39 mm (3.3" x 2.9" x 1.5") | Weight 260g (0.57lbs)



Powerful • Simple • Reliable

SHEARWATER NERD 2

**REBREATHER TESTED
 RECREATIONAL REQUESTED**

The world's first near eye remote display for scuba divers has been redesigned for enhanced flexibility and reliability. In addition to the DiveCAN and Fischer versions, OC divers can now experience the freedom the NERD 2 has to offer. The universal regulator mount allows divers to secure the NERD 2 within their line of sight and dive with the security of knowing their crucial dive information with a glance of the eye.

From the combination of the Micro LCD display and the magnifying lens, the data on the NERD 2 appears as if you were looking at a 25 inch TV 12 feet away.



DIVEMODE

OC Rec – 3 gas recreational computer | OC Tec – Multi gas, Trimix decompression computer | CC INT - Closed Circuit fixed PPO2 | CC EXT - Closed circuit real time monitoring of 1 or 3 O2 sensors | Gauge – Bottom timer with stop watch

FEATURES

Decompression computer | Open circuit – Trimix, Nitrox, Air | Buhlmann Gradient Factors | Rebreather – Closed circuit fixed PPO2 | Closed circuit external PPO2 | 3 axis, tilt compensated, digital compass | VPMB | Dive Logging | Upgradeable Firmware | Smart Ready Bluetooth Interface

SPECIFICATIONS

Screen Resolution - 320x240 QVGA | Display Type - Micro LCD | Battery Type - Single AA (any type) | Battery Life AA Alkaline - 30 Hours, SAFT LS14500 - 35 Hours | Number of Gases - 5 OC / 5 CC | Dive Log - 1000 Hours | Dimensions - Eyepiece (WxH) 32 x 76 mm (Ø 1.25" x 3") Battery Box (WxHxD) 76 x 52 x 32 mm (3" x 2.25" x 1.25") | Weight Nerd 355g (0.78 lbs)



Powerful • Simple • Reliable

DRYSUITS	
• Xpedition	4
• Xpedition SE	6
• Explorer NST	8
• Thenar	11
UNDERGARMENT	
• Arctic X-Nine	12
• Arctic X-Pure	14
• Arctic X-Basic	15
• X-Heat	16
ULTIMATE BAG	18
SF 2^{ecf} REBREATHER	
• SF2 Backmount	20
• SF2 Sidemount	22
• SF2 Conversion Kits & Cylinders	24
SCUBA FORCE POWER LIGHT	26
BLADE	28
STAGE RIGGING KIT	32
REGULATORS	34
REGULATOR SETS TEC	36
REGULATOR SETS RECREATIONAL	38
SPG'S	40
COMPASSES	41
WINGS	42
HARNESSES	44
BACKPLATES	46
ADAPTER	48
METAL	50
HOSES	52
SMB	53
SPOOLS & COOKIES & ARROWS	54
REELS & WETNOTES	55
MASKS	
• VISION II MASKS	56
• ONE MASK	58
SHEARWATER	
• Shearwater Teric	60
• Shearwater Perdix AI	61
• Shearwater Perdix	62
• Shearwater Petrel 2	64
• Shearwater Petrel 2 Fischer	64
• Shearwater Nerd 2	65



SF SCUBA FORCE

2020

SCUBA FORCE
DISCOVER THE ADVENTURE

DIVE2GETHER.NET TAUCHSPORT GMBH
RESTSTRAUCH 197
41199 MÖNCHENGLADBACH
GERMANY

PHONE: +49 (0)2166 1456 880
EMAIL: MAIL@SCUBAFORCE.EU